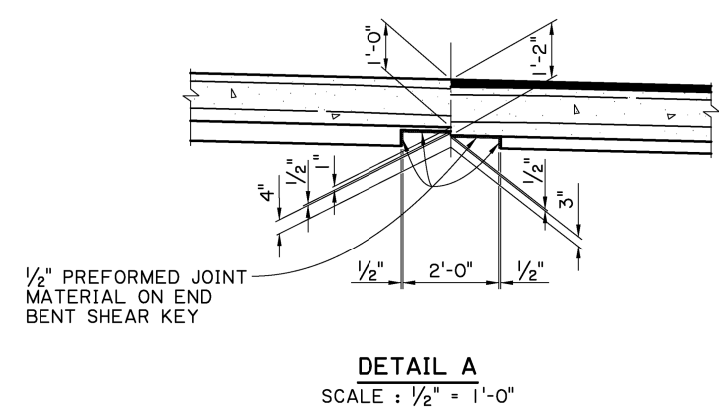


ESTIMATED QUANTITIES (ONE SLAB)						
BAR	NO.	SHORT BAR	VAR. (IN.)	LONG BAR	TOTAL LENGTH	LOCATION
601	1			14'-3"	14'-3"	LONGIT. BOT. OF SLAB
602-681	EA.	14'-4"	1.6076	24'-11"	1570'-0"	LONGIT. BOT. OF SLAB
682	1			25'-0"	25'-0"	LONGIT. BOT. OF SLAB
683	29			40'-8"	1179'-4"	TRANSV. BOT. OF SLAB
684-6104	EA.	1'-10"	22.4000	39'-2"	430'-6"	TRANSV. BOT. OF SLAB
TOTAL NO. 6 BARS = 3219'-1" = 4835 LBS.						
401-441	EA.	14'-3"	6.1429	25'-0"	431'-9"	LONGIT. TOP OF SLAB
442	14			42'-6"	595'-0"	TRANSV. TOP OF SLAB
443-453	EA.	2'-8"	44.8000	40'-0"	234'-8"	TRANSV. TOP OF SLAB
454	14			2'-0"	28'-0"	DOWELS IN CURB
455	2			9'-7"	19'-2"	LONGITUDINAL IN CURB
TOTAL NO. 4 BARS = 1308'-7" = 874 LBS.						
TOTAL DEFORMED REINFORCING STEEL = 5709 LBS.						
						CONCRETE APPROACH SLAB = 91.11 SQ.YDS.
						ASPHALT CONCRETE = 9.1 TONS
						SAW CUT AND SEAL = 39 LIN. FT.

- * INCLUDES ONE (1) 1'-8" MINIMUM LAP SPLICE. ALL LAP SPLICES ARE TO BE STAGGERED.
- TO BE PAID FOR UNDER ITEM CONCRETE APPROACH SLABS.
- ☒ REQUIRED WHEN APPROACH SLAB IS ADJACENT TO ASPHALT CONCRETE PAVEMENT. PAID FOR UNDER ITEM ASPHALT CONCRETE, AND SAWING AND SEALING TRANSVERSE JOINTS IN ASPHALTIC CONCRETE OVERLAY.



APPROACH SLAB NOTES:

CONSTRUCTION SPECIFICATIONS: LATEST APPROVED LOUISIANA STANDARD SPECIFICATIONS FOR ROADS AND BRIDGES, SUPPLEMENTAL SPECIFICATIONS AND SPECIAL PROVISIONS.

DESIGN SPECIFICATIONS: AASHTO LRFD BRIDGE DESIGN SPECIFICATIONS 4th EDITION, WITH 2008 & 2009 INTERIMS.

STRUCTURAL CONCRETE: ALL CONCRETE SHALL BE CLASS A1. EXPOSED EDGES SHALL HAVE A 3/4" CHAMFER, UNLESS OTHERWISE NOTED.

ASPHALT CONCRETE: TO BE THE SAME TYPE AS THE ASPHALT CONCRETE USED FOR THE APPROACH ROADWAY PAVEMENT OR OVERLAY.

REINFORCING STEEL: ALL REINFORCING STEEL SHALL BE GRADE 60. DIMENSIONS RELATING TO THE FABRICATION ARE OUT-TO-OUT OF BARS, UNLESS OTHERWISE NOTED. DIMENSIONS RELATING TO SPACING ARE TO BAR CENTERS.

BEDDING MATERIAL: FOR DETAILS OF BEDDING MATERIAL AND UNDERDRAINS, SEE STANDARD DETAIL BD.2.10.1.0.07.

SAWING & SEALING: THE ASPHALTIC CONCRETE SHALL BE SAW CUT AT THE END OF THE CONCRETE APPROACH SLAB THE ENTIRE ROADWAY WIDTH AND SEALED.

BASIS OF PAYMENT: ALL MATERIAL SHALL BE PAID FOR UNDER 'CONCRETE APPROACH SLABS' ACCORDING TO THE SPECIFICATIONS, EXCEPT WHERE NOTED ON THIS SHEET.

VICTOR A. SANCHEZ
License No. 33976
PROFESSIONAL ENGINEER
IN
CIVIL ENGINEERING

Victor Sanchez
05/17/17

DESIGNED BY: J. NAKHLEH
CHECKED BY: B. DELATTE
DATE: 05/17/17

CONTROL SECTION: D. HYME
CHECKED BY: J. NAKHLEH
DATE: 05/17/17

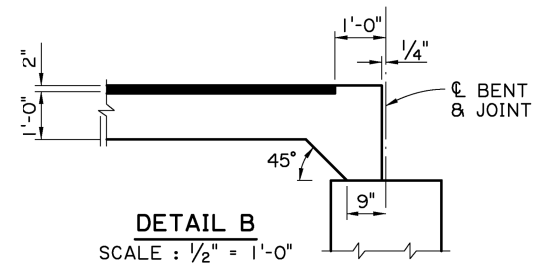
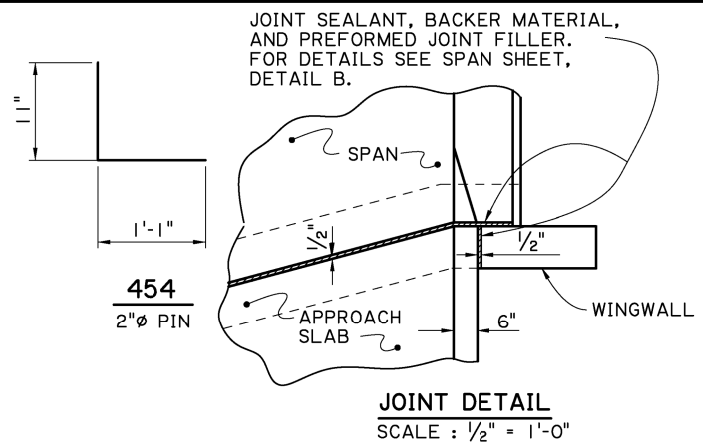
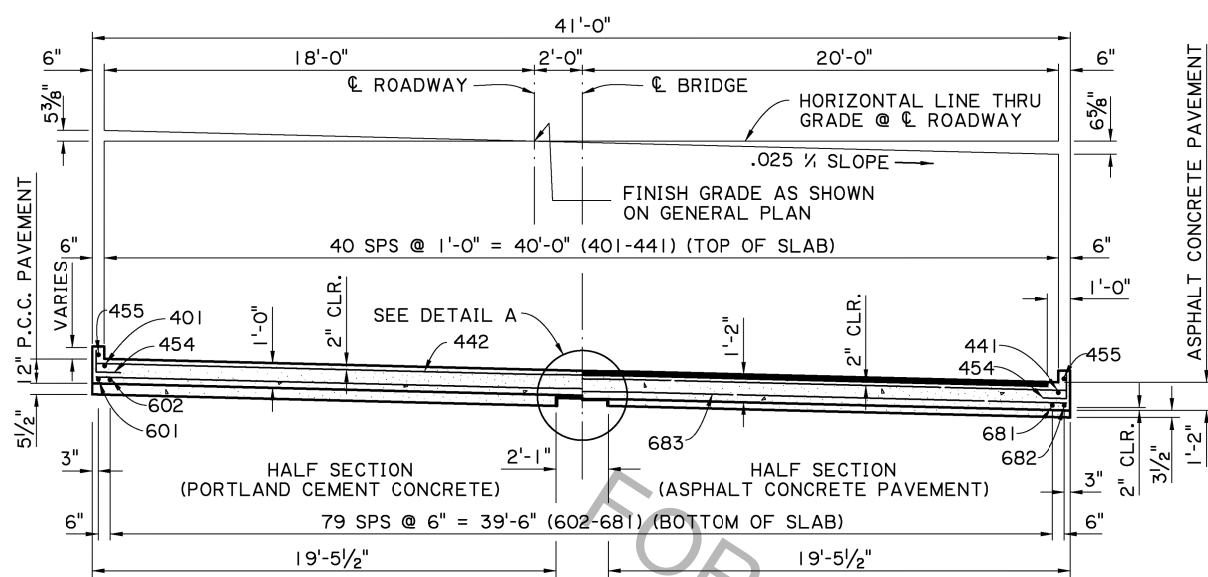
STATE PROJECT: 05/17/17

REVISION OR CHANGE ORDER DESCRIPTION: BY: NO. DATE

APPROACH SLAB
CONCRETE APPROACH SLAB
40'-0" CLEAR ROADWAY
75' CROSSING ONE WAY TANGENT

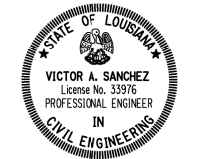
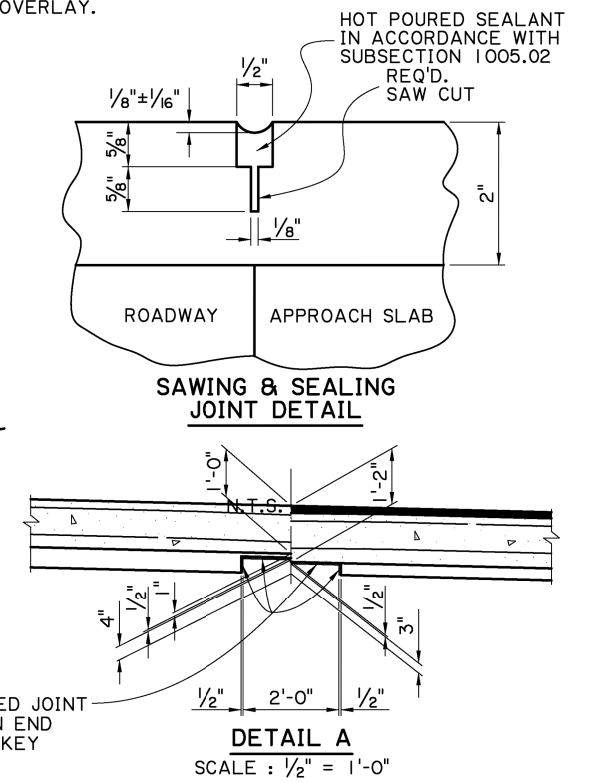
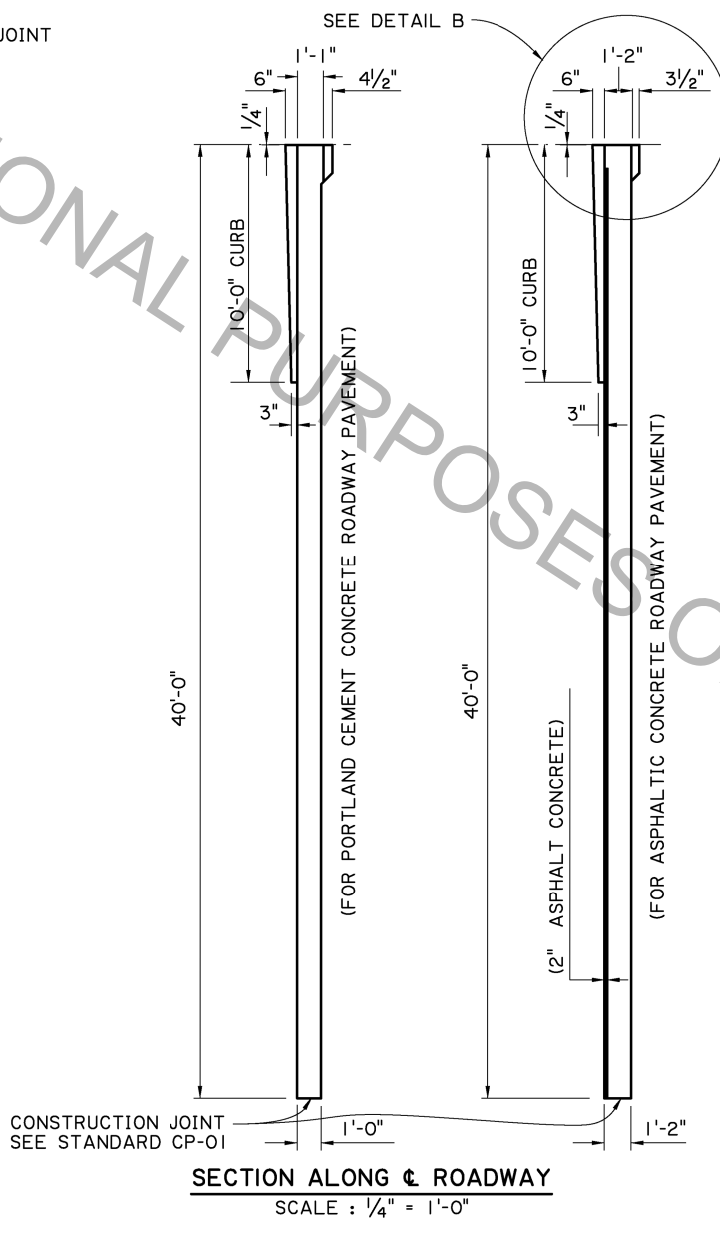
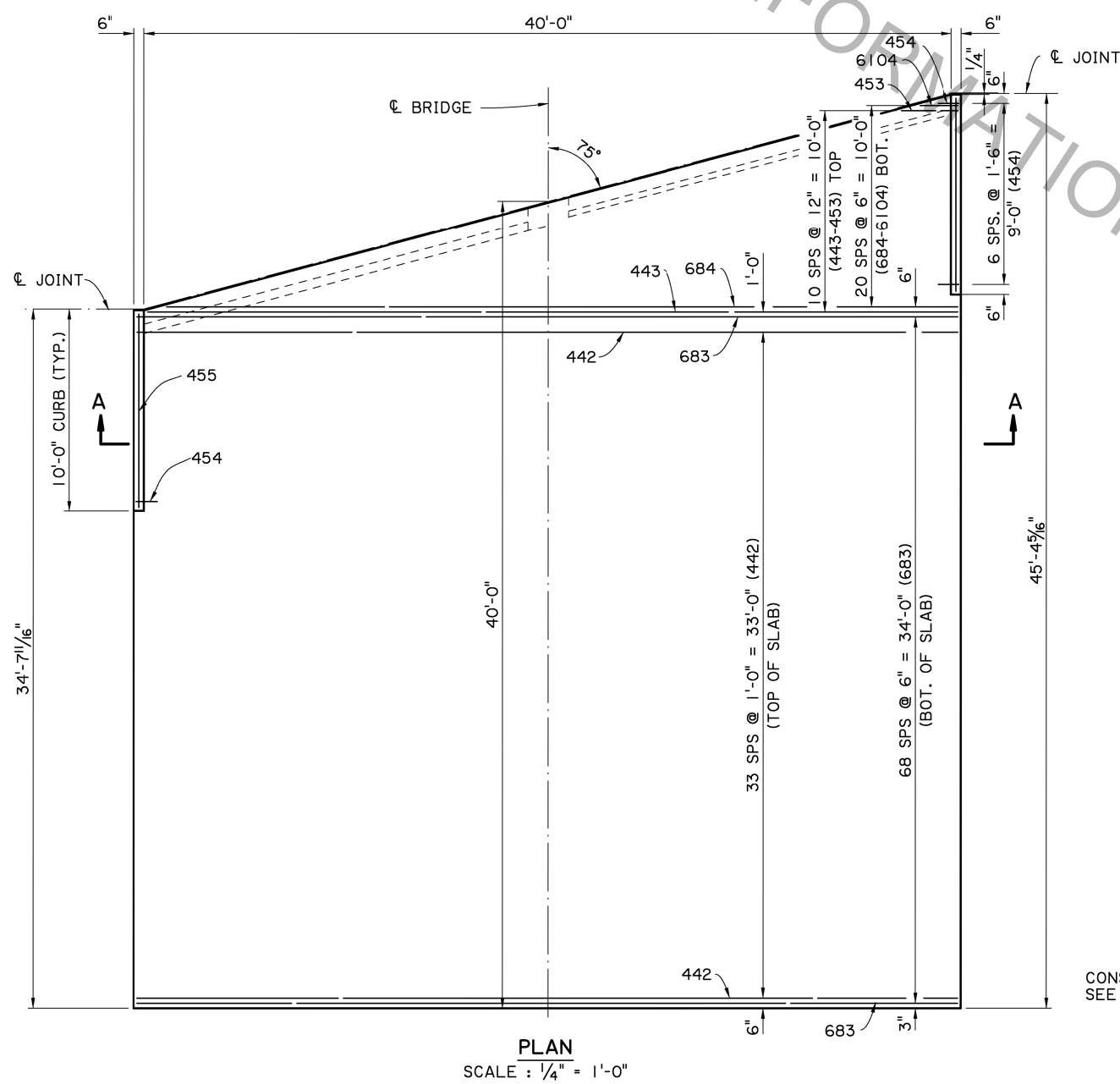
CASBR-75-40T-20L-20SL

DOTD
DOT BRIDGE DESIGN



ESTIMATED QUANTITIES (ONE SLAB)						
BAR	NO.	SHORT BAR	VAR. (IN.)	LONG BAR	TOTAL LENGTH	LOCATION
601	1			34'-3"	34'-3"	LONGIT. BOT. OF SLAB
602-681	1 EA.	34'-4"	1.6076	44'-11"	3170'-0"	LONGIT. BOT. OF SLAB
682	1			45'-0"	45'-0"	LONGIT. BOT. OF SLAB
683	69			40'-8"	2806'-0"	TRANSV. BOT. OF SLAB
684-6104	1 EA.	1'-10"	22.4000	39'-2"	430'-6"	TRANSV. BOT. OF SLAB
TOTAL NO. 6 BARS = 6485'-9" = 9742 LBS.						
401-422	1 EA.	34'-2"	3.2381	39'-10"	814'-0"	LONGIT. TOP OF SLAB
423-441	1 EA.	41'-10"	3.2222	46'-8"	840'-9"	LONGIT. TOP OF SLAB
442	34			42'-6"	1445'-0"	TRANSV. TOP OF SLAB
443-453	1 EA.	2'-8"	44.8000	40'-0"	234'-8"	TRANSV. TOP OF SLAB
454	14			2'-0"	28'-0"	DOWELS IN CURB
455	2			9'-7"	19'-2"	LONGITUDINAL IN CURB
TOTAL NO. 4 BARS = 3381'-7" = 2259 LBS.						
TOTAL DEFORMED REINFORCING STEEL					= 12001 LBS.	
CONCRETE APPROACH SLAB					= 182.22 SQ.YDS.	
ASPHALT CONCRETE					= 18.6 TONS	
SAW CUT AND SEAL					= 39 LIN. FT.	

- * INCLUDES ONE (1) 1'-8" MINIMUM LAP SPLICE. ALL LAP SPLICES ARE TO BE STAGGERED.
- o TO BE PAID FOR UNDER ITEM CONCRETE APPROACH SLABS.
- o REQUIRED WHEN APPROACH SLAB IS ADJACENT TO ASPHALTIC CONCRETE PAVEMENT. PAID FOR UNDER ITEM ASPHALT CONCRETE, AND SAWING AND SEALING TRANSVERSE JOINTS IN ASPHALT CONCRETE OVERLAY.



Victor A. Sanchez
05/17/17

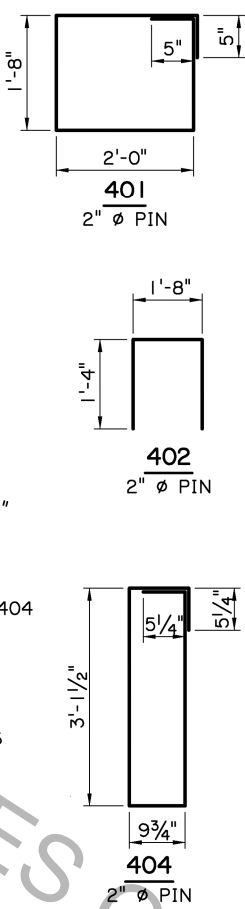
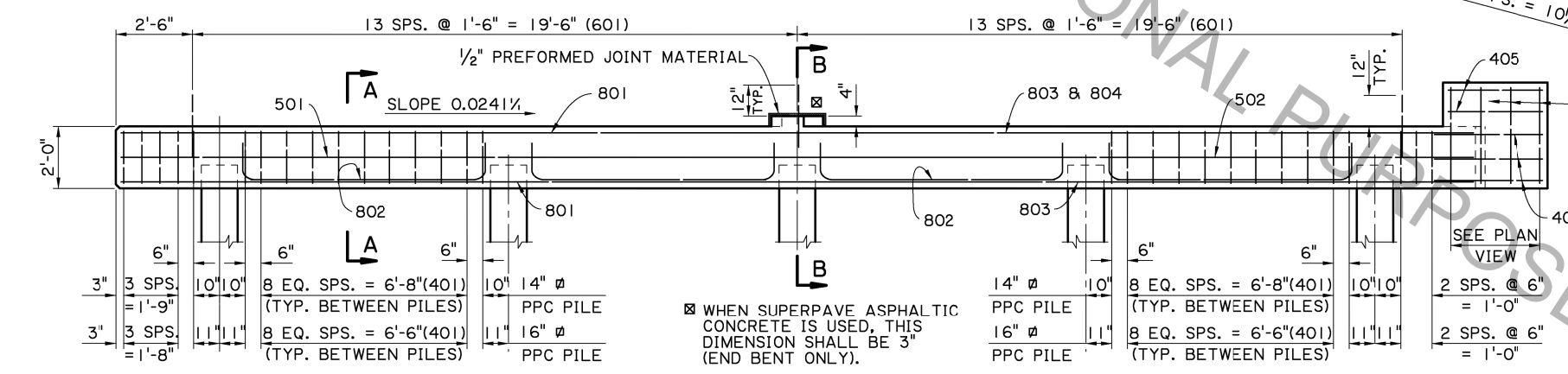
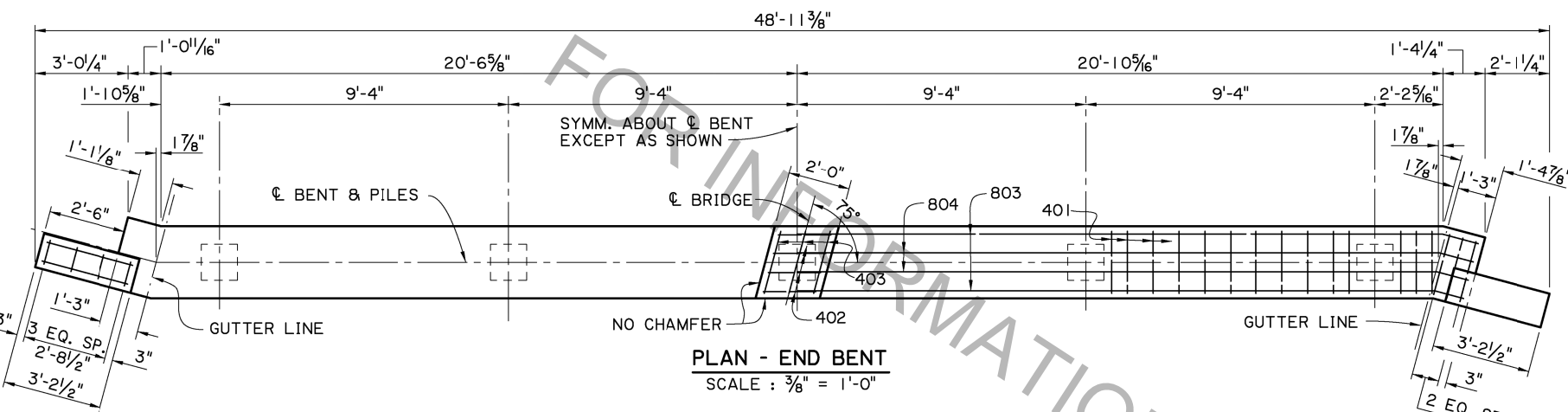
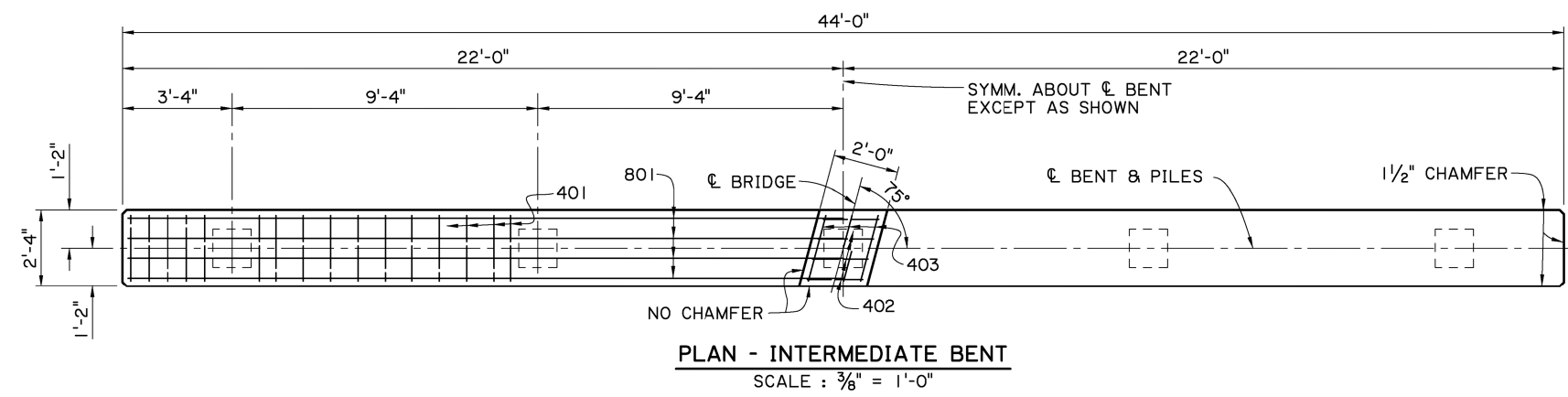
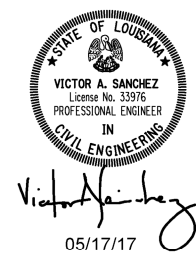
APPROACH SLAB NOTES:
CONSTRUCTION SPECIFICATIONS: LATEST APPROVED LOUISIANA STANDARD SPECIFICATIONS FOR ROADS AND BRIDGES, SUPPLEMENTAL SPECIFICATIONS AND SPECIAL PROVISIONS.
DESIGN SPECIFICATIONS: AASHTO LRFD BRIDGE DESIGN SPECIFICATIONS 4th EDITION, WITH 2008 & 2009 INTERIMS.
STRUCTURAL CONCRETE: ALL CONCRETE SHALL BE CLASS A1. EXPOSED EDGES SHALL HAVE A 3/4" CHAMFER, UNLESS OTHERWISE NOTED.
ASPHALT CONCRETE: TO BE THE SAME TYPE AS THE ASPHALT CONCRETE USED FOR THE APPROACH ROADWAY PAVEMENT OR OVERLAY.
REINFORCING STEEL: ALL REINFORCING STEEL SHALL BE GRADE 60. DIMENSIONS RELATING TO THE FABRICATION ARE OUT-TO-OUT OF BARS, UNLESS OTHERWISE NOTED. DIMENSIONS RELATING TO SPACING ARE TO BAR CENTERS.
BEDDING MATERIAL: FOR DETAILS OF BEDDING MATERIAL AND UNDERDRAINS, SEE STANDARD DETAIL BD.2.10.1.0.07.
SAWING & SEALING: THE ASPHALTIC CONCRETE SHALL BE SAW CUT AT THE END OF THE CONCRETE APPROACH SLAB THE ENTIRE ROADWAY WIDTH AND SEALED.
BASIS OF PAYMENT: ALL MATERIAL SHALL BE PAID FOR UNDER 'CONCRETE APPROACH SLABS' ACCORDING TO THE SPECIFICATIONS, EXCEPT WHERE NOTED ON THIS SHEET.

SHEET NUMBER	NO.	DATE
DESIGNED	J. NAKHLEH	
CHECKED	B. DELATTE	
CONTROL SECTION	D. HYMEL	
CHECKED	J. NAKHLEH	
REVIEWED	OS/17/17	
STATE PROJECT		
PARISH		
BY		
REVISION OR CHANGE ORDER DESCRIPTION		
NO.		
DATE		
NO.		
DATE		
NO.		
DATE		

APPROACH SLAB
 40'-0" CONCRETE APPROACH SLAB
 40'-0" CLEAR ROADWAY
 75° CROSSING ONE WAY TANGENT

STANDARD DETAIL
 CASBR-75-40T-40L-20SL

DOTD
 DOTD BRIDGE DESIGN



ESTIMATED QUANTITIES (ONE INTER. BENT)

BAR NO.	UNIT LENGTH	TOTAL LENGTH	LOCATION
801	6	43'-8"	LONGIT. IN CAP
802	8	10'-2"	LONGIT. IN CAP BETWEEN PILES
TOTAL NO. 8 BARS = 343'-4" = 917 LBS.			
601	27	2'-0"	DOWELS
TOTAL NO. 6 BARS = 54'-0" = 81 LBS.			
501	2	43'-8"	LONGIT. IN CAP
TOTAL NO. 5 BARS = 87'-4" = 91 LBS.			
401	54	8'-2"	STIRRUPS IN CAP
402	4	4'-0"	STIRRUPS IN RISER
403	3	2'-0"	LONGIT. IN RISER
TOTAL NO. 4 BARS = 463'-0" = 309 LBS.			
TOTAL DEFORMED REINFORCING STEEL = 1398 LBS.			
CLASS A1 CONCRETE = 7.42 CU. YDS.			
MAX. PILE LOAD: SERVICE DEAD LOAD = 26 TONS			
SERVICE LIVE LOAD = 38 TONS			
FACTORED TOTAL LOAD = 87 TONS			

* ADD 81 LBS. OF REINFORCING STEEL (27-601 DOWELS) WHEN TWO FIXED ENDS OCCUR ON THE SAME BENT.

ESTIMATED QUANTITIES (ONE END BENT)

BAR NO.	UNIT LENGTH	TOTAL LENGTH	LOCATION
802	8	10'-2"	LONGIT. IN CAP BETWEEN PILES
803	4	43'-7"	LONGIT. IN CAP
804	2	43'-7"	LONGIT. IN CAP
TOTAL NO. 8 BARS = 342'-10" = 915 LBS.			
601	27	2'-0"	DOWELS
TOTAL NO. 6 BARS = 54'-0" = 81 LBS.			
502	2	43'-7"	LONGIT. IN CAP
TOTAL NO. 5 BARS = 87'-2" = 91 LBS.			
401	56	8'-2"	STIRRUPS IN CAP
402	4	4'-0"	STIRRUPS IN RISER
403	3	2'-0"	LONGIT. IN RISER
404	8	8'-9"	STIRRUPS IN WINGWALL
405	8	2'-10"	LONGIT. IN WINGWALL
406	12	4'-0"	LONGIT. IN WINGWALL
TOTAL NO. 4 BARS = 620'-0" = 414 LBS.			
TOTAL DEFORMED REINFORCING STEEL = 1501 LBS.			
CLASS A1 CONCRETE = 8.22 CU. YDS.			
MAX. PILE LOAD: SERVICE DEAD LOAD = 26 TONS			
SERVICE LIVE LOAD = 38 TONS			
FACTORED TOTAL LOAD = 87 TONS			

16" PPC PILES USED FOR ESTIMATING PURPOSES ONLY. (ADD 0.05 CU. YDS. OF CLASS A1 CONCRETE PER BENT WHEN 14" PPC PILES ARE USED.)

BENT NOTES:

CONSTRUCTION SPECIFICATIONS: LATEST APPROVED LOUISIANA STANDARD SPECIFICATIONS FOR ROADS AND BRIDGES, SUPPLEMENTAL SPECIFICATIONS AND SPECIAL PROVISIONS.

DESIGN SPECIFICATIONS: AASHTO LRFD BRIDGE DESIGN SPECIFICATIONS, 4th EDITION WITH 2008 & 2009 INTERIMS.

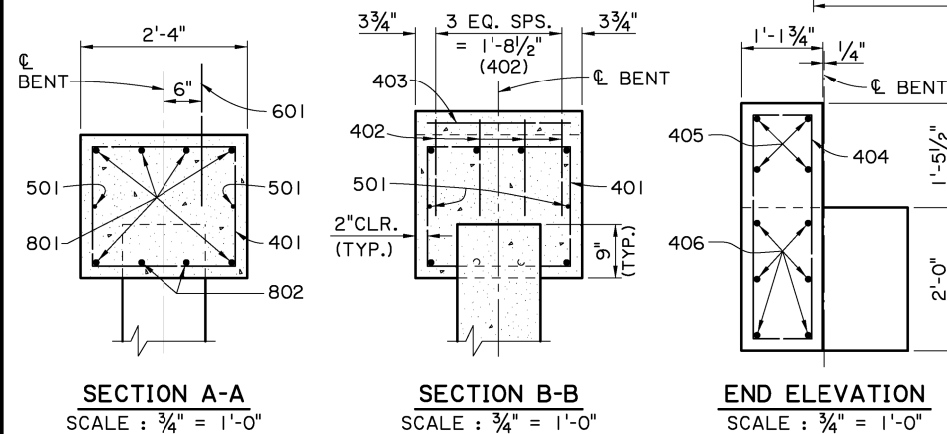
DESIGN LOAD: LIVE LOAD IS HL-93, AND LADV-11 (LOUISIANA DESIGN VEHICLE LIVE LOAD 2011).

STRUCTURAL CONCRETE: ALL CONCRETE SHALL BE CLASS A1. EXPOSED EDGES SHALL HAVE A 3/4" CHAMFER UNLESS OTHERWISE NOTED. ALL EXPOSED FACES OF WINGWALLS AND ENDS OF CAPS SHALL RECEIVE A SURFACE FINISH AS PER SUB-SECTION 805.08 OF THE STANDARD SPECIFICATIONS, EXCEPT WHEN SPECIFIED ELSEWHERE IN THE PLANS. 1/2" PREFORMED JOINT MATERIAL AND ASPHALT SATURATED FELT SHALL BE INCLUDED IN THE PRICE BID FOR CLASS A1 CONCRETE.

REINFORCING STEEL: ALL REINFORCING STEEL SHALL BE GRADE 60. DIMENSIONS RELATING TO FABRICATION ARE OUT TO OUT OF BARS UNLESS OTHERWISE NOTED. DIMENSIONS RELATING TO SPACING ARE TO BAR CENTERS, UNLESS OTHERWISE NOTED. DOWELS (601 BARS) SHALL BE PROVIDED AT ALL FIXED BEARINGS AND APPROACH SLAB BEARINGS (SEE GENERAL PLAN). ALL EXPOSED ENDS OF DOWELS SHALL BE WRAPPED WITH TWO LAYERS OF 15 LB. ASPHALT SATURATED FELT. CLOSE FITTING TUBES OF COMPRESSIBLE MATERIAL NOT LESS THAN 3/16" THICK MAY BE SUBSTITUTED.

PRECAST CONCRETE PILES: FOR DETAILS SEE STANDARD DETAIL BD.2.5.1.0.01 (CS-216). EXTERIOR PILES ARE TO BE BATTERED OUTWARD AT 1/2 ON 12 IN THE LONGITUDINAL DIRECTION OF THE BENT, WHEN NOTED ON THE GENERAL PLAN.

PREFORMED JOINT MATERIAL: PREFORMED JOINT MATERIAL SHALL BE IN ACCORDANCE WITH SECTION 815.04 OF THE STANDARD SPECIFICATIONS.



AS-DESIGNED RATING

VEHICLE	RATING FACTOR	NOTES
HL-93 (INV)	1.470	---
HL-93 (OPR)	1.905	---
LADV-11 (INV)	1.130	MAGNIFICATION FACTOR = 1.3

SHEET NUMBER: _____

DESIGNED: J. PAINE
CHECKED: J. NAKHLEH
DATE: 05/17/17

PARISH: _____
CONTROL SECTION: _____
STATE PROJECT: _____

REVISION OR CHANGE ORDER DESCRIPTION: _____

NO. _____

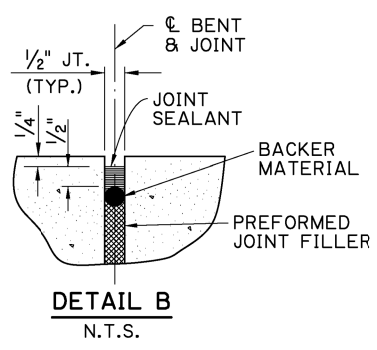
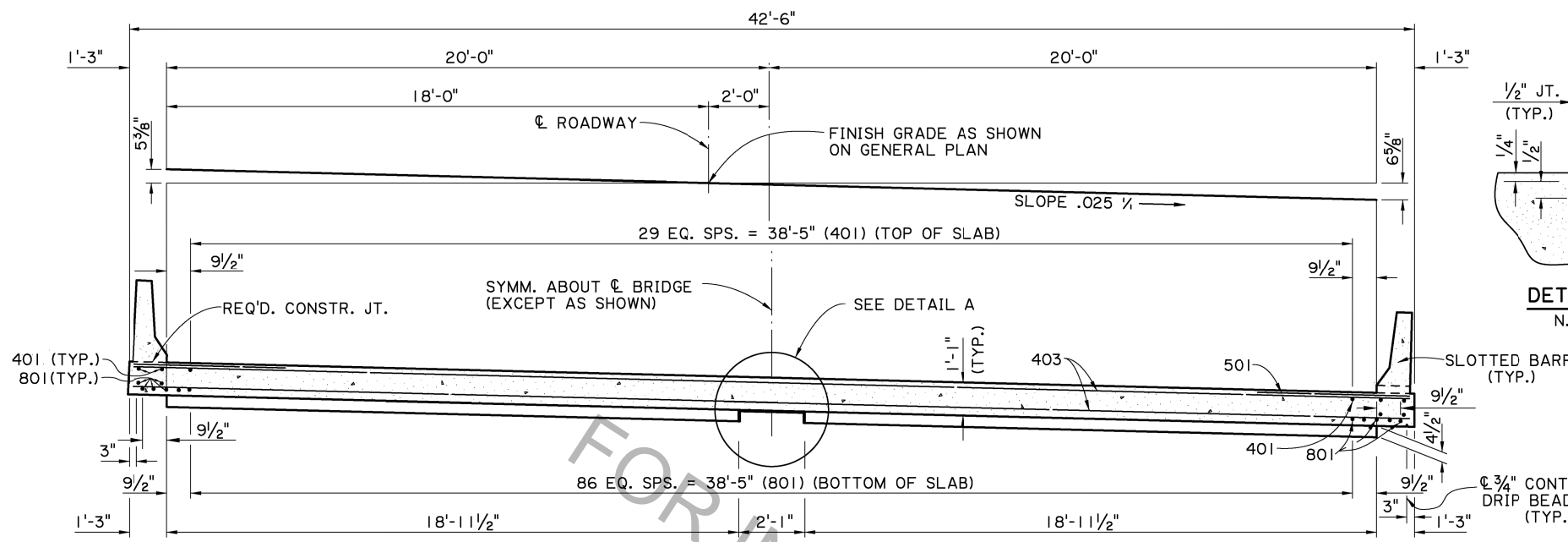
DATE: _____

BY: _____

REINFORCED CONCRETE PILE BENT
40'-0" CLEAR ROADWAY
75° CROSSING ONE WAY TANGENT

STANDARD DETAIL: BCSBR-75-40T-20SL

DOTD
LOUISIANA
DOT BRIDGE DESIGN



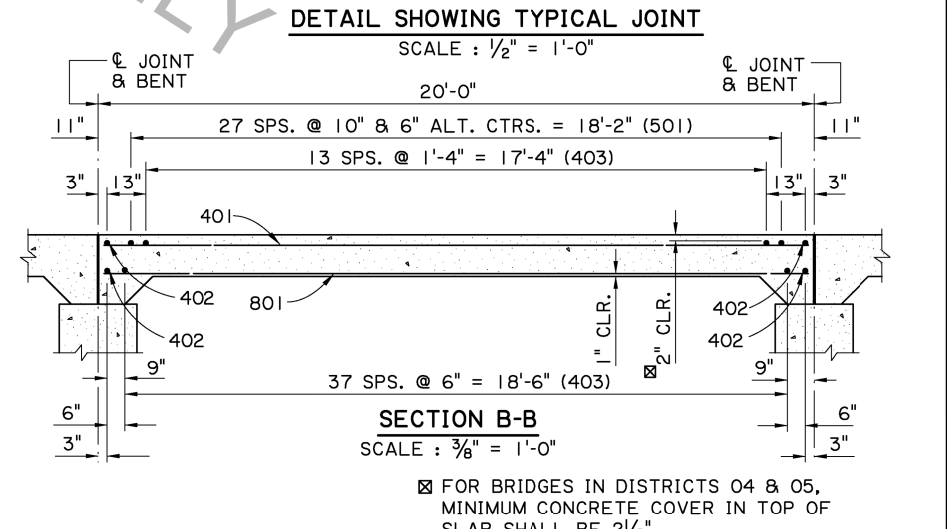
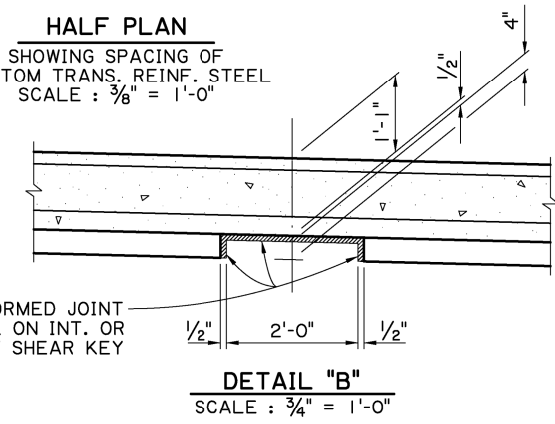
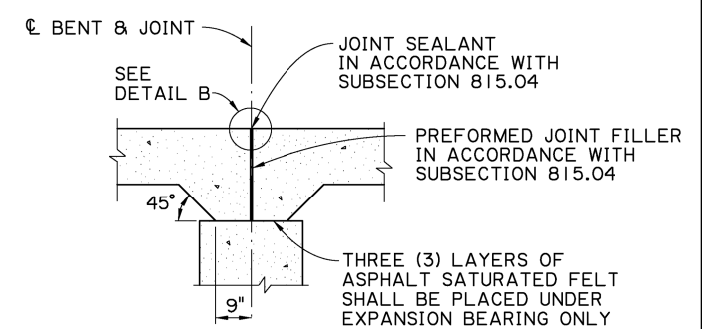
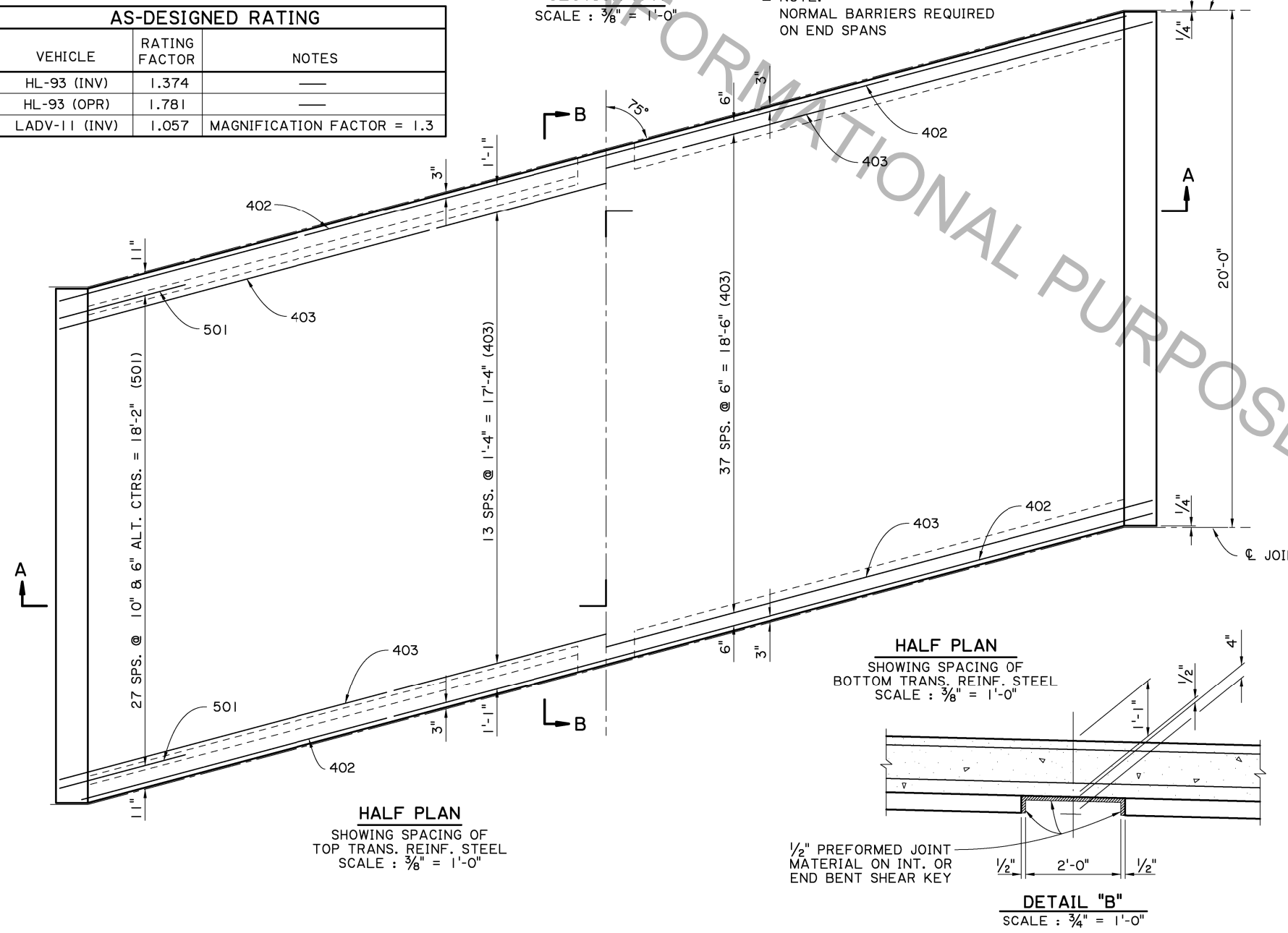
ESTIMATED QUANTITIES (ONE SPAN)				
BAR NO.	UNIT	TOTAL LENGTH	LOCATION	
801	99	19'-7"	1938'-9"	LONGIT. BOT. OF SLAB
TOTAL NO. 8 BARS = 1938'-9" = 5176 LBS.				
501	56	5'-0"	280'-0"	TRANS. TOP OF SLAB
TOTAL NO. 5 BARS = 280'-0" = 292 LBS.				
401	34	19'-7"	665'-10"	LONGIT. TOP OF SLAB
* 402	4	44'-3"	177'-0"	TRANS. TOP & BOT. OF SLAB
* 403	52	45'-3"	2553'-0"	TRANS. TOP & BOT. OF SLAB
TOTAL NO. 4 BARS = 3195'-10" = 2135 LBS.				
TOTAL DEFORMED REINFORCING STEEL = 7603 LBS.				
CLASS A1 CONCRETE = 35.03 CU. YDS.				
CONCRETE RAILING (BARRIER TYPE) = 40.00 LIN. FT.				

* INCLUDES ONE (1) 1'-8" MINIMUM LAP SPLICE. ALL LAP SPLICES ARE TO BE STAGGERED.

SPAN NOTES:
CONSTRUCTION SPECIFICATIONS: LATEST APPROVED LOUISIANA STANDARD SPECIFICATIONS FOR ROADS AND BRIDGES, SUPPLEMENTAL SPECIFICATIONS AND SPECIAL PROVISIONS.
DESIGN SPECIFICATIONS: AASHTO LRFD BRIDGE DESIGN SPECIFICATIONS, 4th EDITION WITH 2008 & 2009 INTERIMS.
DESIGN LOAD: THE BRIDGE DECK IS DESIGNED FOR A FUTURE WEARING COURSE OF 19 PSF. THE LIVE LOAD IS HL-93, AND LADV-11 (LOUISIANA DESIGN VEHICLE LIVE LOAD 2011).
STRUCTURAL CONCRETE: ALL CONCRETE SHALL BE CLASS A1. EXPOSED EDGES SHALL HAVE A 3/4" CHAMFER UNLESS OTHERWISE NOTED. JOINT SEALANT, BACKER MATERIAL, PREFORMED JOINT FILLER, AND ASPHALT SATURATED FELT SHALL BE INCLUDED IN THE PRICE BID FOR CLASS A1 CONCRETE.
REINFORCING STEEL: ALL REINFORCING STEEL SHALL BE GRADE 60. DIMENSIONS RELATING TO SPACING ARE TO BAR CENTERS, DIMENSIONS RELATING TO FABRICATION ARE OUT TO OUT OF BARS UNLESS OTHERWISE NOTED. ALL REINFORCING BARS SHALL BE PLACED TO PROVIDE A MINIMUM COVER OF ONE INCH FROM THE SURFACE OF THE DRAIN HOLES TO THE FACE OF THE BARS EXCEPT FOR THE TRANSVERSE BARS WHICH MAY BE CUT FOR THIS PURPOSE.
GUARD RAIL: REFER TO THE GENERAL PLAN AND STANDARD PLAN BD.1.1.1.0.01 (GR-200) FOR GUARD RAIL REQUIREMENTS.
BARRIER RAILING: FOR BARRIER RAILING DETAILS, SEE STANDARD DETAIL BD.2.6.1.14.02 (BR-02).

AS-DESIGNED RATING		
VEHICLE	RATING FACTOR	NOTES
HL-93 (INV)	1.374	---
HL-93 (OPR)	1.781	---
LADV-11 (INV)	1.057	MAGNIFICATION FACTOR = 1.3

SECTION A-A
 SCALE: 3/8" = 1'-0"
 NOTE: NORMAL BARRIERS REQUIRED ON END SPANS



SECTION B-B
 SCALE: 3/8" = 1'-0"
 FOR BRIDGES IN DISTRICTS 04 & 05, MINIMUM CONCRETE COVER IN TOP OF SLAB SHALL BE 2 1/2"

SHEET NUMBER	PARISH	DESIGNED	DATE
	J. NAKHLEH	J. NAKHLEH	05/17/17
CONTROL SECTION	D. HAMEL	REVIEWED	
STATE PROJECT	J. NAKHLEH		
REVISION OR CHANGE ORDER DESCRIPTION			
NO.			
DATE			
BY			

SPAN: 20'-0" CONCRETE SLAB SPAN
 40'-0" CLEAR ROADWAY
 75° CROSSING ONE WAY TANGENT

STANDARD DETAIL: CSSBR-75-40T-20SL

DOTD
 DOTD BRIDGE DESIGN